

VINTAJ[®] Filigree Techniques

*Bend, twist and twirl
filigree to make your own
“Creative Settings.”
Create settings, bails, rings
and much more!*



VINTAJ Natural Brass Co.
Jewelry Findings



FILIGREE WRAPPING

Front page project step by steps



STEP 1

Turn in the edges of the filigree to approximately the same size and shape as the stone or focal using bale making pliers.



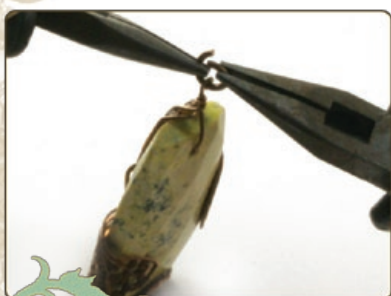
STEP 2

Place the stone or focal in the center of the filigree. While holding the focal, use your fingers and or chain nose pliers to turn in the edges of the filigree and secure the focal. Re-crimp the edges until they are symmetrical and secure.



STEP 3

Pass a 1.5 inch eye pin through the drilled hole in the focal and an opening in the filigree. Bend the straight end of the eye pin around the neck of the looped end and crimp tight with a chain nose plier.



STEP 4

Attach jump rings through the eye pin bale. Add chain, beads or a silkie to complete your necklace.



Basic Filigree Wrapping

Add intricate detail to your design by forming a basic filigree wrap. Pull in color with rich cranberry pearls and smoky quartz glass beads.





STEP 1

Turn in the edges of the filigree to approximately the same size as the stone or focal using bail making pliers.



STEP 2

Set the stone or focal inside the filigree.



STEP 3

Crimp down the filigree edges to secure the stone using the chain nose pliers. Go through the edges again and re-crimp until they are symmetrical and secure.

TIP: Make sure that your filigree is symmetrical with the stone or focal before you begin crimping down.

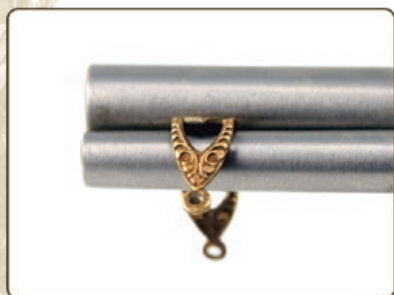
Don't limit yourself—wrap art glass, semi precious, abalone, enamels, brass focals, pottery, memorabilia, soda bottle caps, guitar picks, concert pins and more!



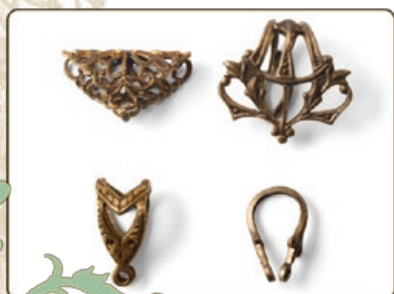
Filigree Bale



STEP 1
Firmly grip the center of the connector with your bale making pliers, with the back side facing the smaller of the two barrels.



STEP 2
A: Bend one end of the connector following the curve of the smaller barrel.
B: Repeat on the opposite end of the connector.



STEP 3
A: Use your bale making pliers to round out any awkward bends by gently crimping down while following the curve of the bale.
B: Use your chain nose pliers to line up the holes on each end of the bale.





Use bail making pliers to form filigree into a ring. Add sparkle with a variety of Swarovski crystal.



Add personality to a simple design by wrapping a donut with filigree! Add a small grouping of charms and crystal for the finishing touch.

For more inspiration visit
vintaj.com



Vintaj is a trademark of Vintaj Natural Brass Co. © Vintaj Natural Brass Co. 2009

The information in these instructions is presented in good faith, but no warranty is given, nor results guaranteed, nor is freedom from any patent to be inferred. Since we have no control over the physical conditions surrounding the application of information herein contained, Hobby Lobby Stores, Inc. disclaims any liability for untoward results.

Follow manufacturer's instructions in using paints and other materials keeping them out of the reach of children, since some may be toxic, or otherwise cause injury.

www.hobbylobby.com 267682